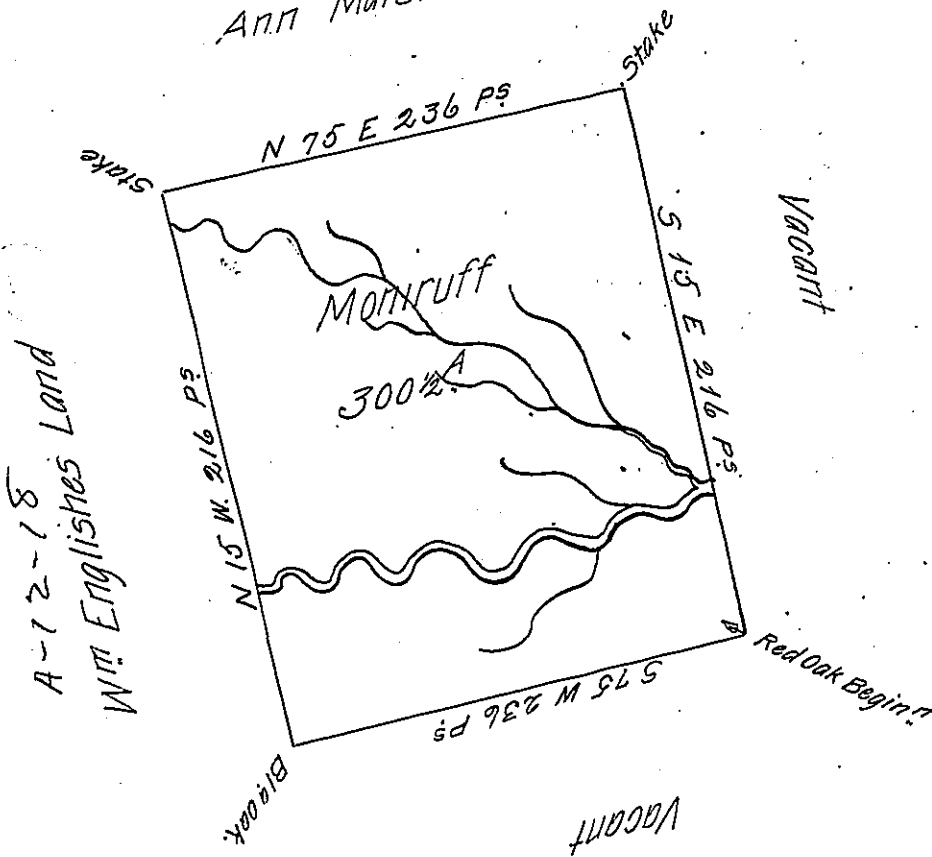


C-118-259
Ann Marshal Land



The above is a Draught of Survey made the 24th Day of March 1785 in Pursuance
of a Warrant granted to Margaret Marshall Decemb. 22^d 1784 Situate on the Waters
of Duck Run in Washington County called Moniruff Containing Three Hundred
& ninety one perches
Acres with the Usual Allowance

David Redick D.S.

John Lukens Esq.

Sur. Genl.

IN TESTIMONY that the above is a copy of the original remaining on file in
the Department of Internal Affairs of Pennsylvania, made
conformably to an Act of Assembly approved the 16th day of
February, 1833, I have hereunto set my Hand and caused
the Seal of said Department to be affixed at Harrisburg,
this eighteenth day of October 1905.

Lea C. D. Brown
Secretary of Internal Affairs.